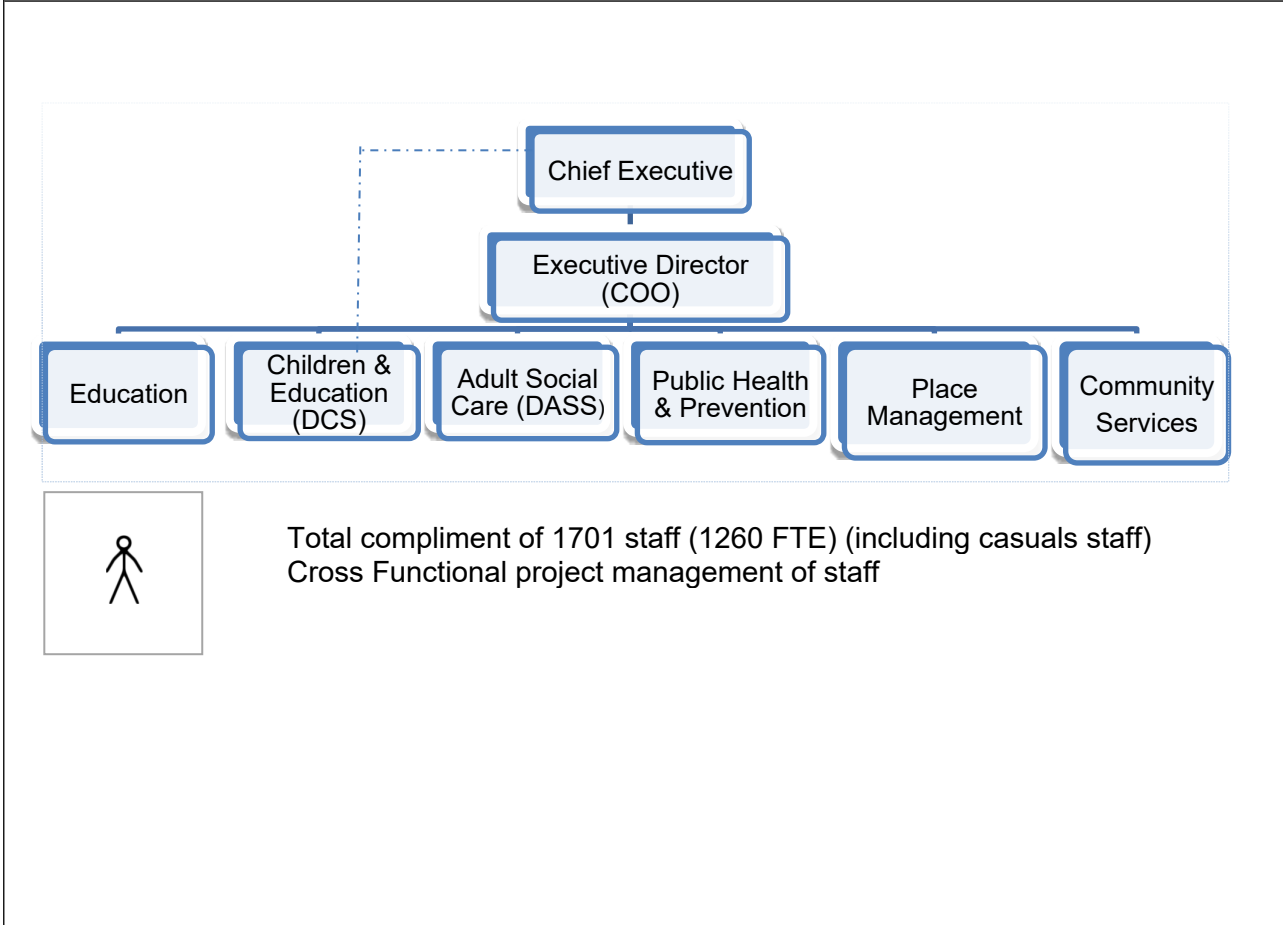


POST TITLE: Executive Director: COO	GRADE: SPOT SALARY PROFILE: Executive Director II POST NO: TBC	This schedule needs to be read in conjunction with the role profile.
--	---	--

SUMMARY OF PURPOSE

To provide inspirational and decisive leadership, holding others to account to ensure that the authority delivers responsive, high quality, cost effective frontline services including Adult Social Care, Public Health, Children’s & Young People Services, Place Management, and Commissioning.

ORGANISATION CHART AND STAFFING (to be confirmed in early 2024)	FINANCIAL DIMENSIONS
--	-----------------------------



£	
Staffing Costs	61,898,833
Gross expenditure	384,134,176
Gross Income	(273,714,620)
Net Budget	110,419,556

SERVICE PORTFOLIO

To deliver the Council's vision and corporate strategy, working in close partnership with the Chief Executive, Senior Leadership Team and Elected Members to ensure value for money services which meet local needs and reflect the Council's purpose to Improve People's Lives.

Children & Education - to secure the best possible outcomes for vulnerable children and their families through the effective and efficient operational delivery of a range of specialist and targeted preventative services for children and young people, including the key statutory children's services such as social care, children's centres, youth connect, youth offending service, safeguarding, education and education inclusion.

Adult Social Care - planning, leading and commissioning of services to deliver the best possible outcomes for local people in an integrated way across complex and specialist health and social care (Mental Health and Learning Disabilities and children's services). To lead the strategic development and delivery of a range of key functions relating to adult safeguarding and quality assurance and to provide wider system leadership through Community Services ensuring that all state and third sector services understand practice standards so that children and adults are protected and practice is effective.

Public Health & Prevention - to promote, develop, commission and influence the way the Council and its partners deliver services in order to positively impact on health & wellbeing outcomes for the local population and to directly inform the population's healthy lifestyle choices. All statutory duties of the DPH.

Place Management - to ensure the effective delivery of key front line services with high reputational impact. These comprise statutory and non-statutory functions. Ensure that the Council delivers a clean and safe quality environment for residents, businesses, tenants and visitors, thus enabling the Council to maximise the economic benefits to the area.

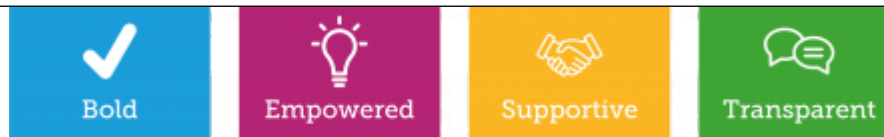
Commissioning – to pull together all strands of commissioning activity across adults, childrens', education and public health (in the first phase) to ensure efficient and cost effective long-term commissioning outcomes for the council.

SPECIFIC ACCOUNTABILITIES

- Contributes to the overarching, long term development of the strategic vision for Bath and North East Somerset Council, setting priorities and objectives for a substantial part of the organisation.
- Strategic thinking to scan the external context for opportunities and challenges, and define new and innovative solutions.

SPECIFIC QUALIFICATIONS, TRAINING, EXPERIENCE OR KNOWLEDGE REQUIRED

- Significant relevant experience at a senior leadership level.
- Experience of successfully leading and managing complex multiple frontline services in a local authority
- Experience of successful influence, negotiation and partnership working with key public and private sector bodies
- Works across the full Council, covering a number of diverse areas with a focus on ensuring that all operations are cohesive and deliver the needs of the community with a long-term vision to be considered and planned for.



Date: November 2023